

Owner's Manual

SuperSign Simple Editor

Contents

3 SUPERSIGN SIMPLE EDITOR

3 System Requirements

4 Install and Delete the SuperSign Simple Editor

4 - Installing the SuperSign Simple Editor

8 - Deleting the SuperSign Simple Editor

9 Running SuperSign Simple Editor

10 Home

11 Create Content

11 - Choosing a Template

12 - Creating a Content

19 Create and Distribute Playlist

20 - Creating a Playlist

23 - Distributing a Playlist

27 Menu Options

27 - New

27 - Open

28 - Save

28 - Save as

29 - Delete

30 - Setting

SuperSign Simple Editor

The SuperSign Simple Editor is a SuperSign solution that enables you to create and distribute content easily and quickly by using templates. With SuperSign Simple Editor, you can create new content using templates provided. You can also import and edit existing pre-stored content. In addition, you can create a playlist by adding existing content and then send the playlist to your TV via USB or network distribution.

System Requirements

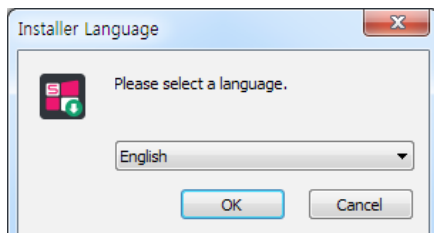
Item	Specification
CPU	Intel Core 2 Duo processor (2.5 GHz or faster)
Memory	2 GB or higher
NETWORK	100 Mbps or higher
Operating System	Windows 7 (32 bit, 64 bit) Windows 8.1 (32 bit, 64 bit)
Browser	Google Chrome 31 or later

Install and Delete the SuperSign Simple Editor

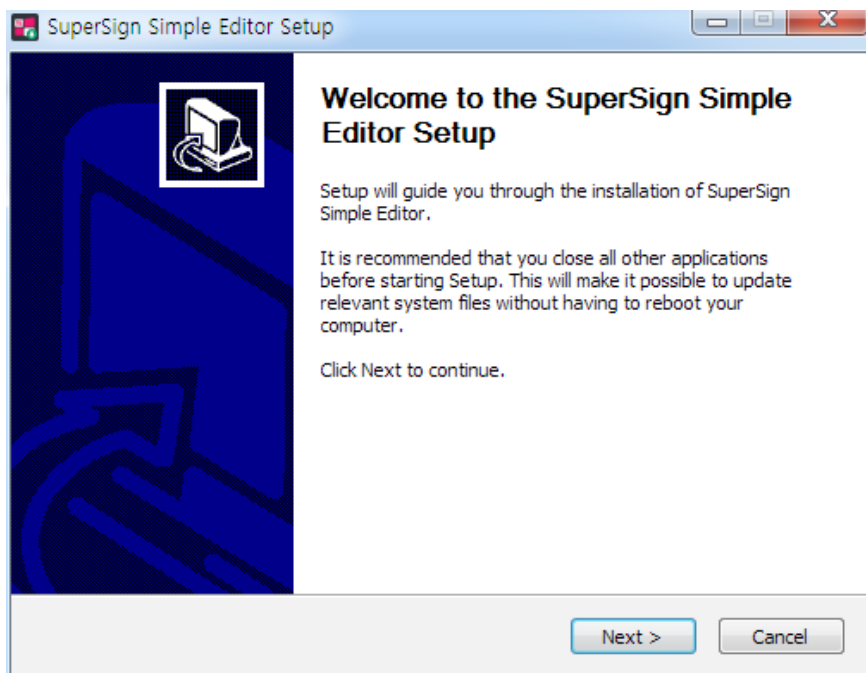
Installing the SuperSign Simple Editor

Double-click the SuperSignSimpleEditor_setup.exe file.

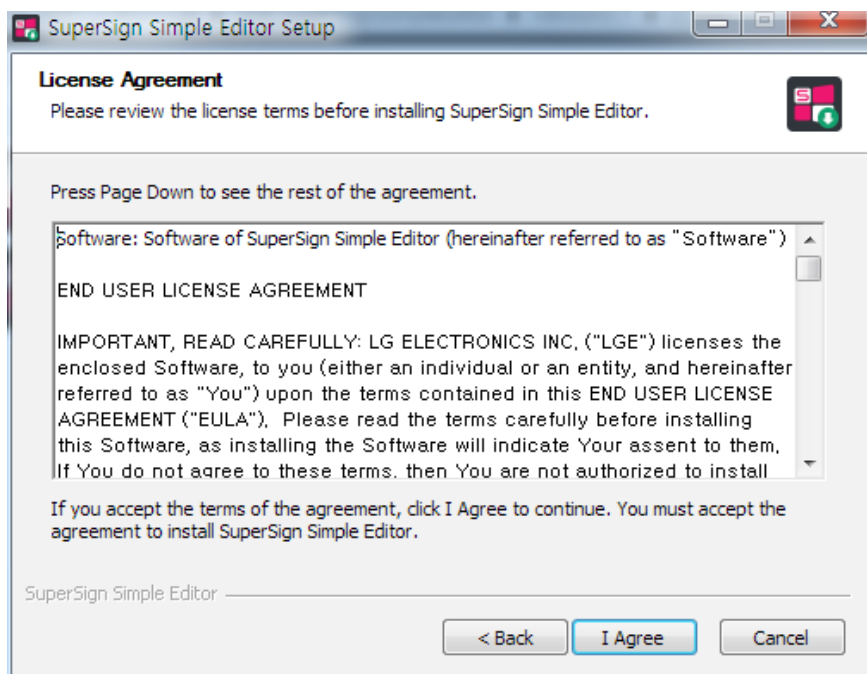
- 1 Select the installation language , and then click **[OK]** to continue.



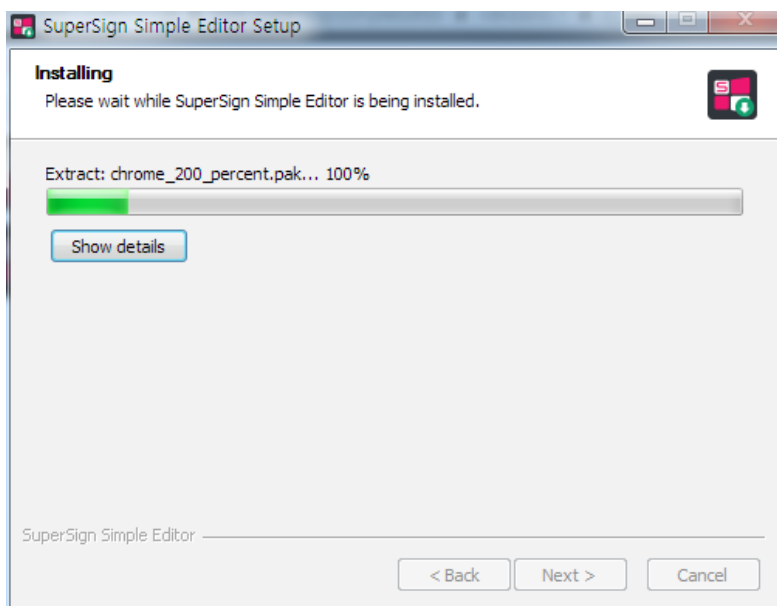
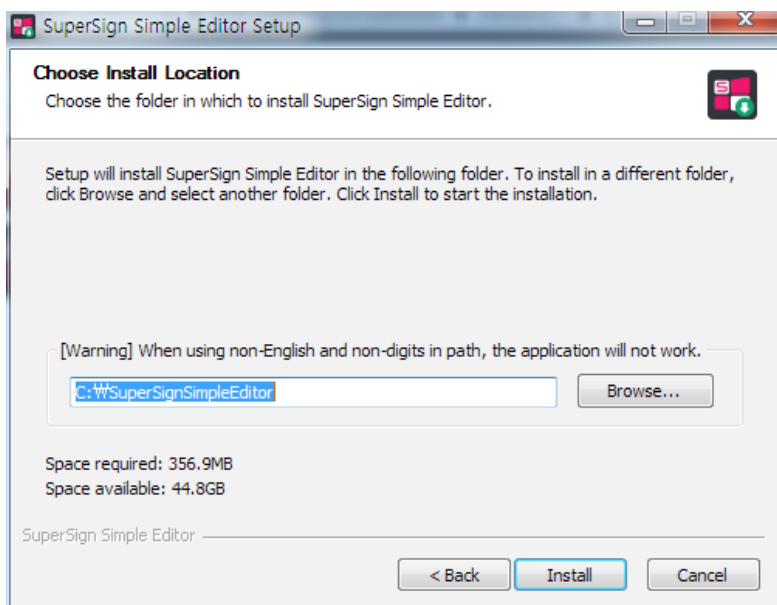
- 2 Read the instructions, and then click **[Next]** to continue.



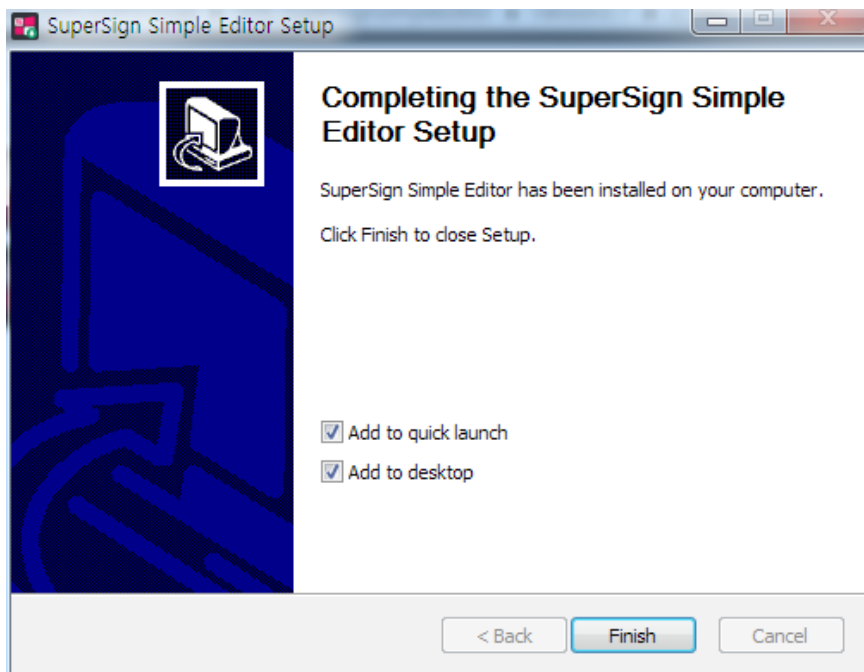
- 3 In the License Agreement window, click [**I Agree**].



- 4 Select the directory in which to install the program, and click **[Install]**. The program will install automatically.



- 5 When the installation is complete, click **[Finish]**. The service will start automatically.



! NOTE

- After the installation is complete, a SuperSign Simple Editor service to run Tomcat 7.0 is registered and launched automatically.

! CAUTION

- SuperSign Simple Editor uses port 28080. When another program is already using port 28080, SuperSign Simple Editor is not launched.

Deleting the SuperSign Simple Editor

To delete SuperSign Simple Editor from your computer, click **Start > All Programs > SuperSign Simple Editor > Uninstall SuperSign Simple Editor**.



CAUTION

- To remove existing SuperSign Simple Editor, use the uninstaller provided by SuperSign Simple Editor.
- You may not be able to remove SuperSign Simple Editor properly while your web browser is running. Close all Chrome browser windows before deleting SuperSign Simple Editor.

Running SuperSign Simple Editor

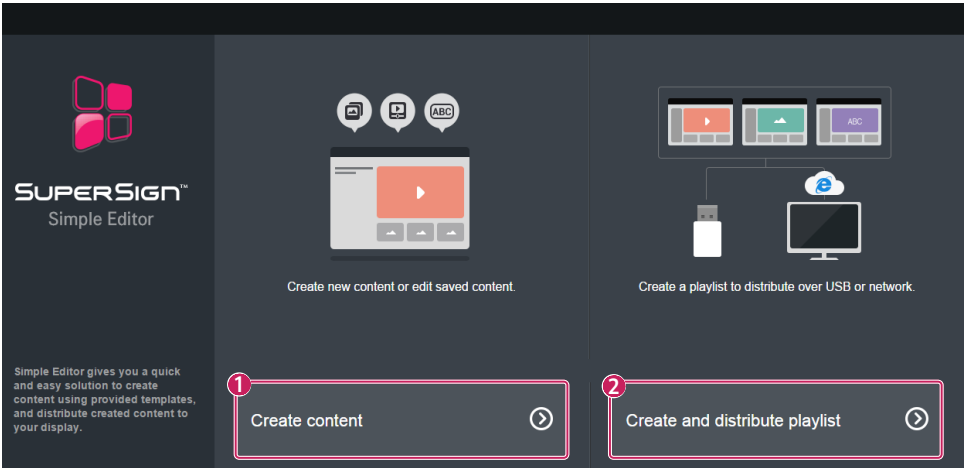
To run SuperSign Simple Editor, click Start > All Programs > SuperSign Simple Editor > SuperSign Simple Editor or double-click the SuperSign Simple Editor icon on your desktop.

NOTE

- To terminate SuperSign Simple Editor, click  at the top right corner of the browser window.

Home

Select [Create content] or [Create and distribute playlist], as the home screen of the SuperSign Simple Editor.



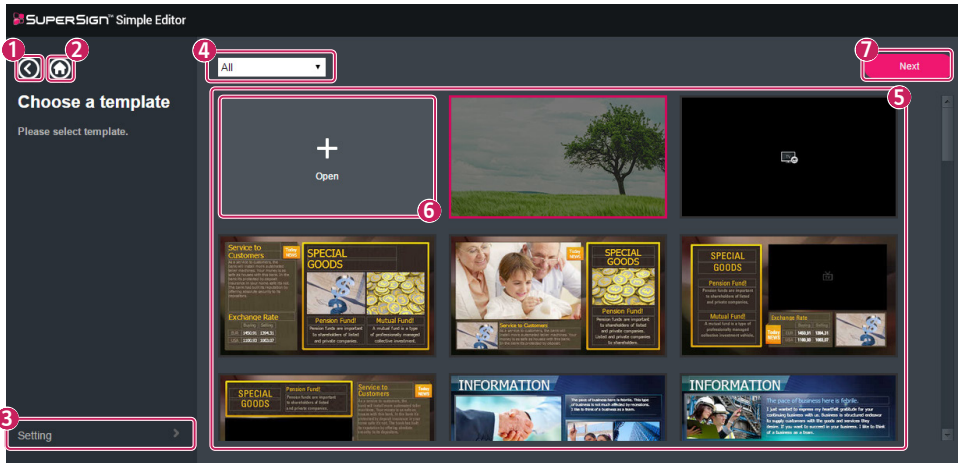
No.	Description
❶	Move to [Choose a template] page for creating contents.
❷	Move to [Create and distribute playlist] page.

Create Content

You can create new content using templates or import pre-existing content for editing.

Choosing a Template

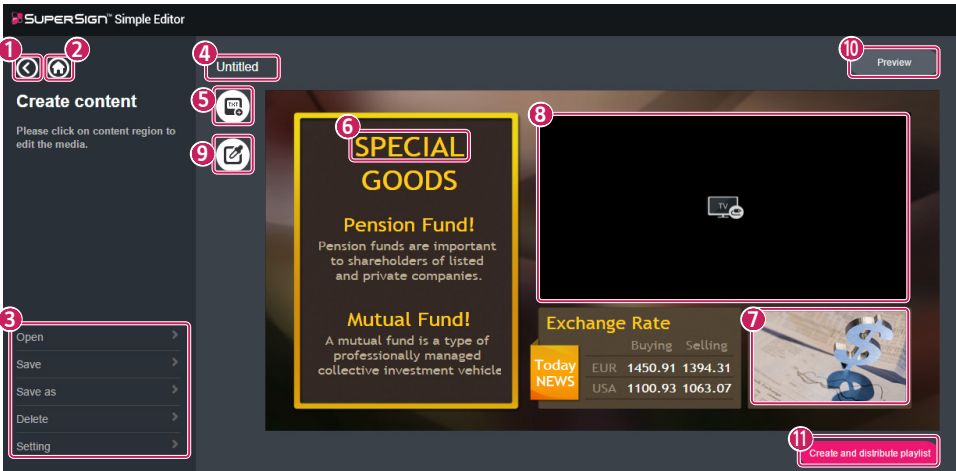
Select your desired template for building content. You can select from 43 templates provided by SuperSign Simple Editor and templates you have stored.



No.	Description
①	Clicking this moves you to the screen prior to the choose a template screen. If there is a change that has not been saved, you will be asked whether to save it or not.
②	Clicking this moves you to the Home screen. If there is a change that has not been saved, you will be asked whether to save it or not.
③	Menu Options (See page 26 for further information.)
④	This shows the categories of templates provided by SuperSign Simple Editor.
⑤	This shows the available templates under the category you selected.
⑥	Clicking [Open] shows the content you have stored.
⑦	Clicking [Next] moves you to the Create Content screen for the selected template.

Creating a Content



You can build content by editing the template you selected.



No.	Description
①	Clicking this moves you to the screen prior to the create content screen. If there is a change that has not been saved, you will be asked whether to save it or not.
②	Clicking this moves you to the Home screen. If there is a change that has not been saved, you will be asked whether to save it or not.
③	Menu Options (See page 26 for further information.)
④	This displays the title of the current content. If you are making a new contnet, the text 'Untitled' is displayed.
⑤	Add a Text Box
⑥	Text area (See page 13 for further information.)
⑦	Image area (See page 14 for further information.)
⑧	TV/video area (See page 15 for further information.)
⑨	Edit background feature (See page 16 for further information.)
⑩	Preview feature (See page 19 for further information.)
⑪	Clicking this moves you to the Playlist Edit screen.

Text Area

Add a Text Box

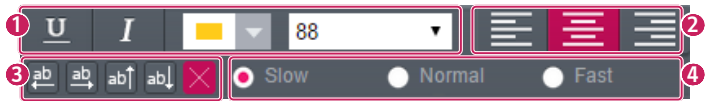
- 1 Click the  [Add a Text Box] icon on the [Create content] page.
- 2 Move your mouse pointer over the edit area, and then you will see the mouse pointer has changed ().
- 3 Click your mouse over your desired position.
- 4 If the position does not overlap with other areas, except for the image area, the text area is added.

! NOTE

- Text can only overlap with the image area.

Edit Text

- 1 Click the text in the edit area.
- 2 When a text edit pop-up appears, you can edit the text.




No.	Description
①	You can change the style of the text. (Underline, italic, color, and size.)
②	You can align the text. (Left-, center-, and right-alignment.)
③	You can set the orientation in which the text will flow.
④	You can set the speed at which the text will flow.

! NOTE

- You can apply text flow to only a single text area in a given piece of content.
- You can only use the LG Display font for your text.
- Depending on the TV Specification, supported Font style might be different.

Move a Text Box

- 1 Move your mouse pointer over the text area.
- 2 Click the  [Move] icon at the top right corner of the area and then position of text area by using your mouse to drag and drop in the edit screen.
- 3 If the position does not overlap with other areas, except for the image area, the text area is moved.

Delete a Text Box


- 1 Move your mouse pointer over the text area.
- 2 Click the  **[Delete]** icon at the top right corner of the area.




Image Area**Add an Image**

- 1 Move your mouse pointer over the image area and click the area.
- 2 Select your desired image in Windows Explorer and click the **[Open]** button.
- 3 If the uploading of the image has completed normally, you can see the image is added to the image area.

! NOTE

- Only jpg, jpeg, png, and bmp image files are supported.
- Up to 1920 x 1080 resolutions are supported for images.
- Images should be no larger than 4G.


Cut an Image

- 1 Move your mouse pointer over the image area.
- 2 Click the  **[Cut]** icon at the top right corner of the area.
- 3 Over the image appears the icon  or  depending on the direction in which the image can be cropped, determined based on the area and image size.
- 4 Drag and drop the image in the direction shown, and the image will be cropped.

! NOTE

- If the size of the image is not fit for cropping, the  icon appears, and you cannot edit the image.

Delete an Image

- 1 Move your mouse pointer over the image area.
- 2 Click the  **[Delete]** icon at the top right corner of the area.

TV/Video Area


Adding a Video

- 1 Move your mouse pointer over the TV/video area and click the area.
- 2 Select your desired video in Windows Explorer and click the **[Open]** button.
- 3 If the uploading of the video has completed normally, a thumbnail image of the uploaded video is displayed in the TV/video area.

NOTE


- Only avi, mp4, mkv, ts, tp, mpg, and mpeg video files are supported.
- Up to 1920 x 1080 resolutions are supported for videos.
- Videos should be no larger than 4G.

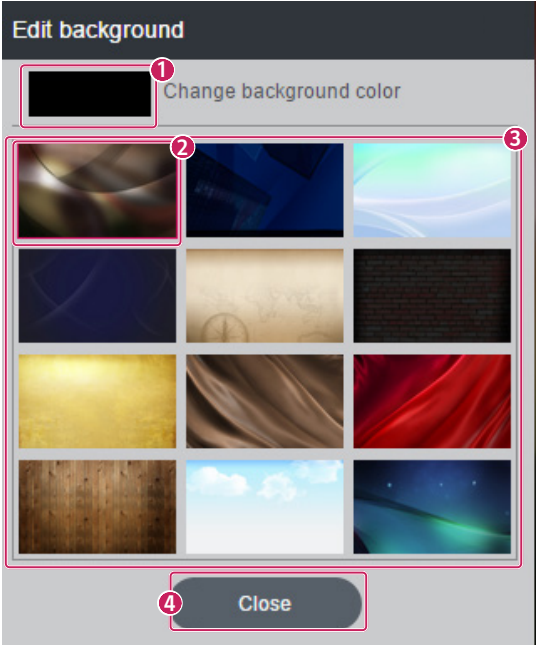
Deleting a Video

- 1 Move your mouse pointer over the TV/video area.
- 2 Click the  **[Delete]** icon at the top right corner of the area.

Background Area

Edit background

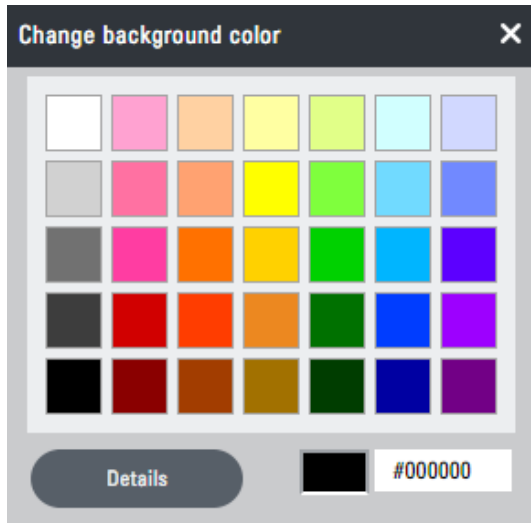
You can edit the background of your template by clicking the  **[Edit background]** icon on the [Create content] page.



No.	Description
❶	Clicking this area opens a pop-up where you can select a color for the background.
❷	This shows the background image of the current template.
❸	This shows every background image that you can choose as the new background. Clicking your desired image immediately applies the image to the edit area.
❹	Clicking this area closes a pop-up.

Change background color

You can select the color of the background. Clicking the [Details] button opens a pop-up where you can choose from a variety of colors.

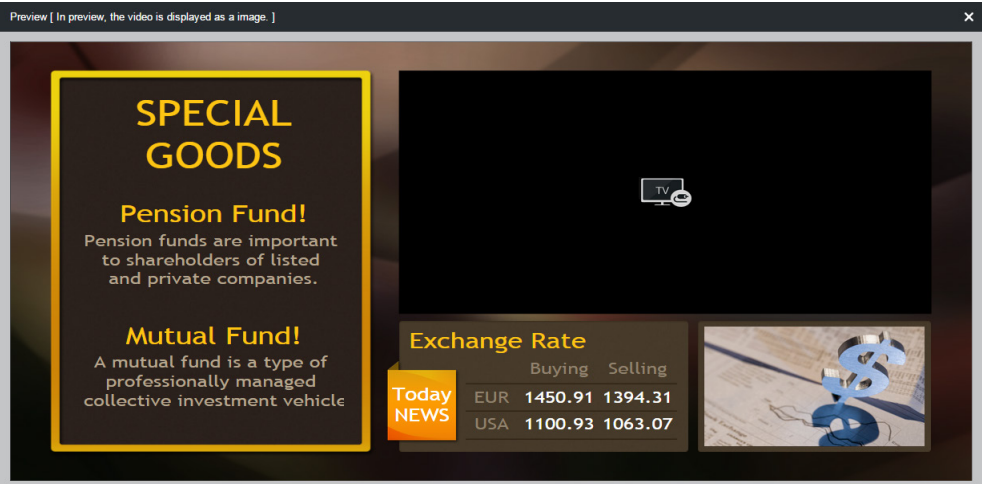


! NOTE

- Templates without background is not provided the edit backgraoud feature.

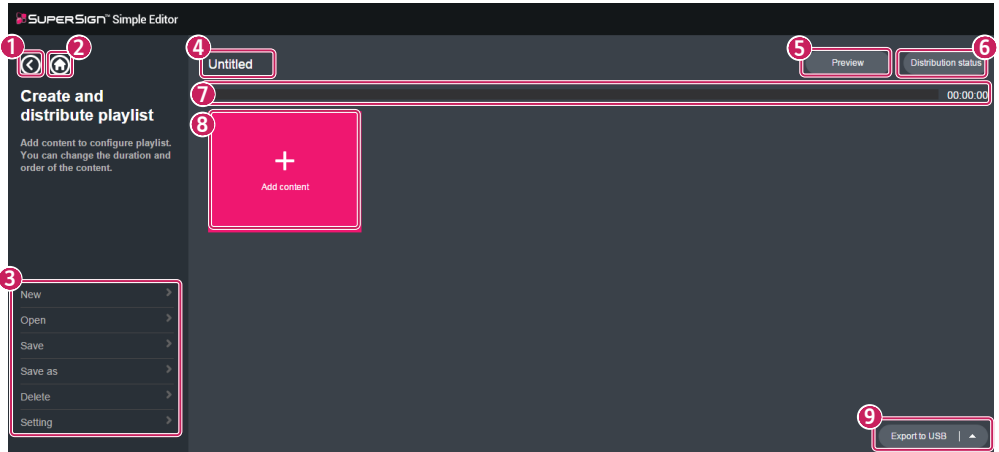
Preview

Clicking the [Preview] button at the top of the page lets you preview the content in the edit area as if it were displayed on the actual TV. When you preview a video, the video is displayed as an image.



Create and Distribute Playlist

This feature lets you create a playlist and send it to your TV via USB or network distribution.



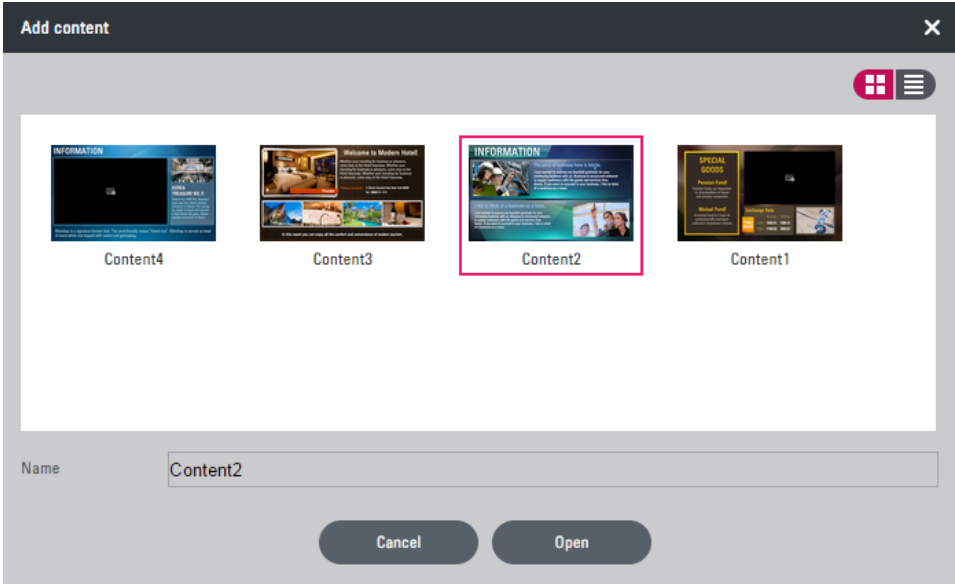
No.	Description
①	Clicking this moves you to the screen prior to the playlist edit screen. If there is a change that has not been saved, you will be asked whether to save it or not.
②	Clicking this moves you to the Home screen. If there is a change that has not been saved, you will be asked whether to save it or not.
③	Menu Options (See page 26 for further information.)
④	This displays the title of the current playlist. If you are making a new playlist, the text "Untitled" is displayed.
⑤	You can preview the playlist created. (See page 22 for further information.)
⑥	You can view the status of distributed playlists. (See page 26 for further information.)
⑦	You can view the playing time and playback position of the content you selected. The total playing time is displayed on the right side.
⑧	You can add pre-stored content to a playlist.
⑨	You can use the Upload to server, Network distribution, and Export to USB features.

Creating a Playlist

After editing and then saving content in the Create Content screen, you can then use that content to create a playlist.

Add Content

You can import pre-stored content to create a playlist. The default playing time of added content is 60 seconds. After adding content to a playlist, you can change its playing time in hours, minutes and seconds.

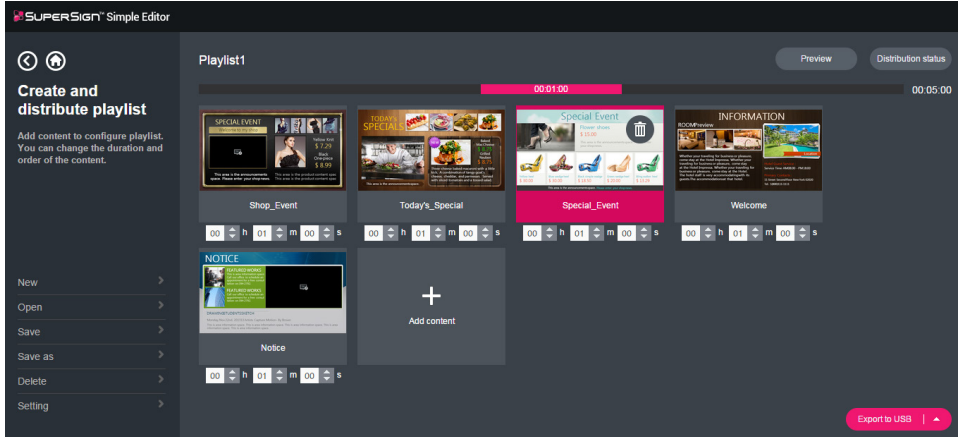


CAUTION

- The maximum total playing time of a playlist is 24 hours, and the minimum total playing time is 10 seconds. The minimum playing time of each piece of content is also 10 seconds.
- Up to 50 pieces of content can be added to a playlist.

Changing the Playback Order

Selecting playlist content displays the playing time and playback position of the content in the timeline. You can change the playback position of content by using your mouse to drag and drop the content to a different position.



! NOTE

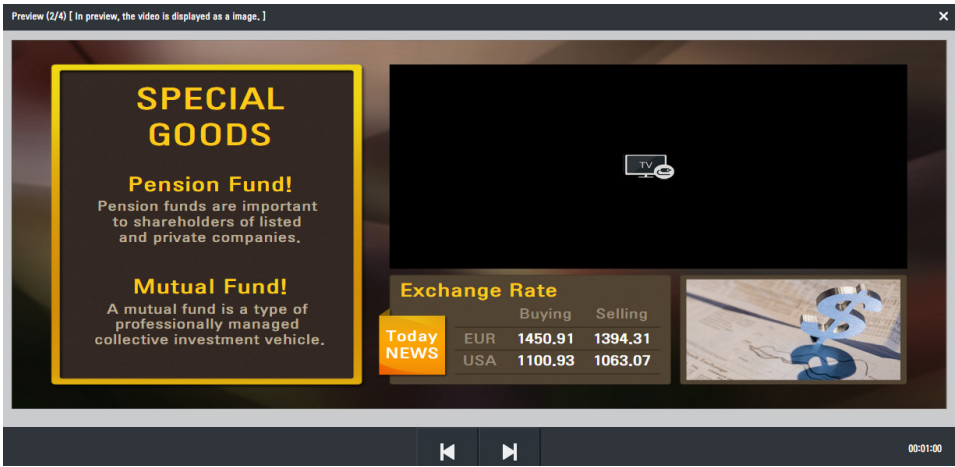
- Play time may vary due to contents loading in the TV.

Deleting Content

You can delete content from a playlist by clicking the  [delete] icon at the top of the added content's screen.

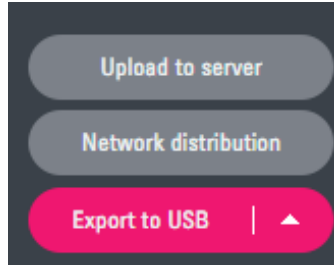
Preview

Clicking **[Preview]** lets you preview the playlist you are currently working on. When you preview a video, the video is displayed as an image. You can move between each piece of content by using the arrow button at the bottom of the Preview screen. Preview is not affected by the set playing time.



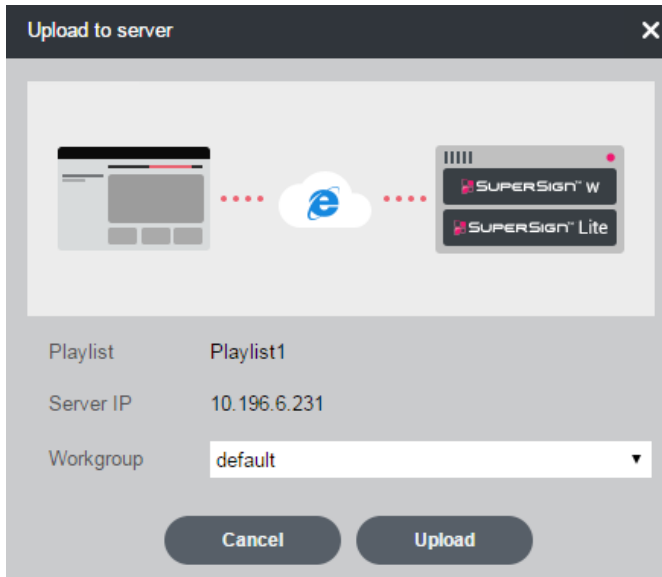
Distributing a Playlist

You can upload your saved playlists to the SuperSign W server as well as send them to your TV via USB or network distribution. Clicking **[Network distribution]** or **[Export to usb]** bottom, the selected menu is highlighted at the bottom.



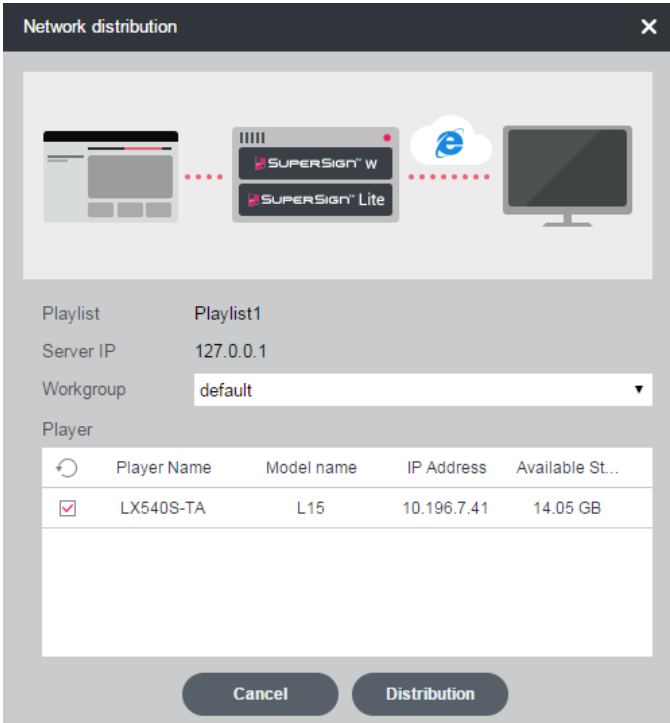
Upload to Server

Clicking **[Upload to server]** uploads the playlist you are working on to a server. If you select a workgroup of the SuperSign W server and click the **[Upload]** button, the playlist is uploaded to the selected workgroup of the server. You need to save playlists in order to upload them to the server. If you have been logged out from the server, the server settings pop-up appears, and you can upload your playlist after logging in to the server.



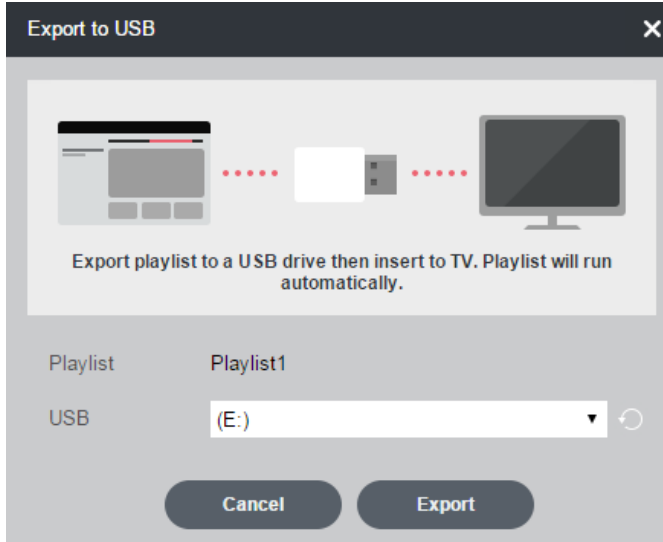
Network Distribution

Clicking **[Network distribution]** distributes the playlist you are working on via the SuperSign W server. If you select a workgroup of the server, you can view the players that belong to the workgroup. Select your desired player and click the **[Distribution]** button, and then the playlist is uploaded to the server and distributed. You need to save playlists in order to distribute them to the server. If you have been logged out from the server, the server settings pop-up appears, and you can distribute your playlist after logging in to the server.



Export to USB

Clicking **[Export to USB]** exports the playlist you are working on to a USB storage device. If you connect the USB storage device to PC and click the **[Export]** button, the playlist is exported to the selected USB device. If you plug the USB device into your TV USB 1 port, the playlist plays automatically. You can also export unsaved playlists that are being worked on to a USB storage device.



! NOTE

- The TV supports Auto Play only for the USB 1 port.

Distribution Status

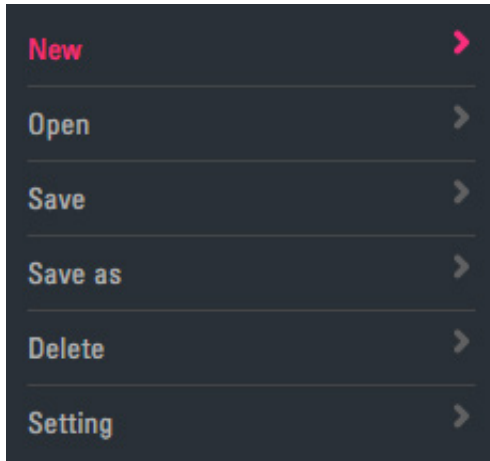
Clicking **[Distribution status]** from the Create and Distribute Playlist screen lets you view the distribution status of playlists distributed via the SuperSign W server.

Distribution status					
Playlist	Player Name	Model name	IP Address	Workgroup	Status
Playlist1	Signage TV 1	43LX540S-UA	192.168.0.3	Workgroup1	100%
Playlist2	Signage TV 2	43LX530S-UA	192.168.0.4	Workgroup1	100%
Playlist3	Signage TV 3	43LX530S-UA	192.168.0.5	Workgroup3	0%
Playlist3	Signage TV 3	43LX540S-UA	192.168.0.6	Workgroup2	45%
Playlist3	Signage TV 3	43LX540S-UA	192.168.0.7	Workgroup1	0%
Playlist3	Signage TV 3	43LX540S-UA	192.168.0.8	Workgroup2	78%

Menu Options

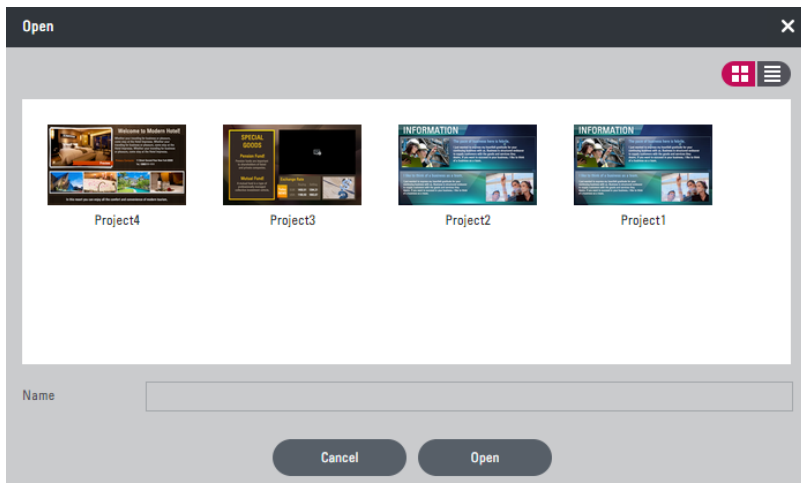
New

You can create a new playlist. If you are already working on a playlist, you will be prompted to choose whether or not to save the current playlist before creating a new one. This is a feature that is not provided in [Create content].



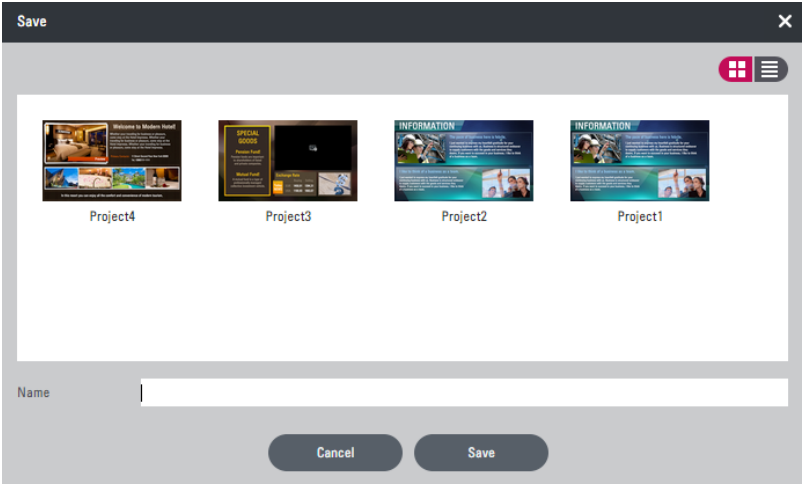
Open

You can import pre-stored content or a pre-stored playlist. Select your desired pre-stored content or playlist and then click **[Open]** to import it. You can view pre-stored content and playlists using Thumbnail View or List View.



Save

You can save content or a playlist you are currently working on. Clicking **[Save]** on content or a playlist imported using **[Open]** saves the imported content or playlist with the same name as the content or playlist you are currently working on.

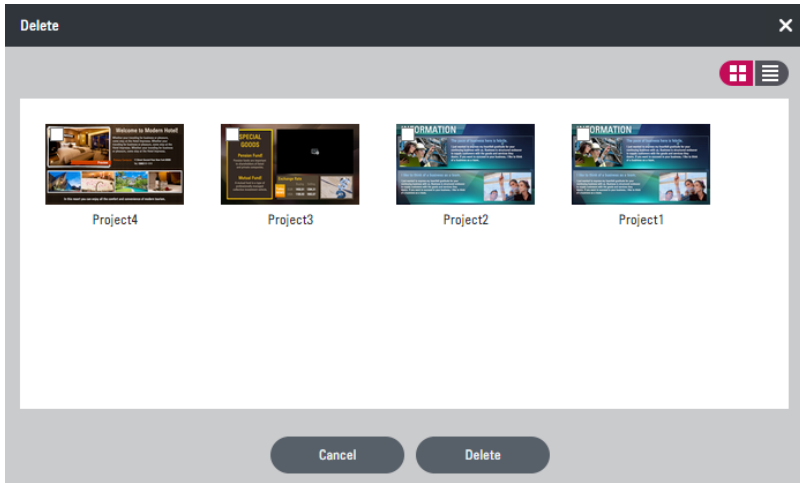


Save as

You can save content or a playlist you are currently working on with a new name. Click **[Save as]** to save the content or playlist you worked on with a new name.

Delete

You can delete pre-stored content or playlists. Select your desired pre-stored content or playlist and then click **[Delete]** to delete the content or playlist.



CAUTION

- you cannot delete content included in a playlist.

Setting

You can change the settings of SuperSign Simple Editor and configure the SuperSign W server's information.

General Control

The **[General Control]** tab in the Setting menu lets you change the Language, Date display and Time display.

Setting

General Control

Server Setup

Information

Language

English

Date display

MM-dd-yyyy

Time display

☐ 12Time

☒ 24Time

Cancel

Apply

Server Setup

The **[Server Setup]** tab in the Setting menu lets you enter information about the SuperSign W server and log in to and log out of the server.

Setting

General Control

Server Setup

Information

Server IP

10

196

18

78

ID

admin

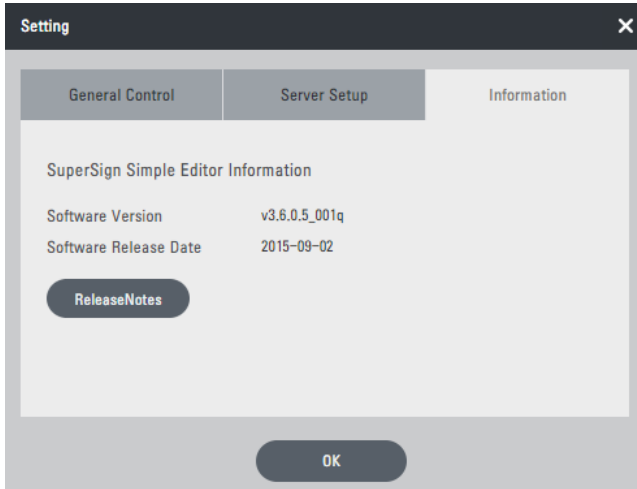
Password

Server log-out

OK

Information

The **[Information]** tab in the Setting menu lets you view information about SuperSign Simple Editor. Clicking **[Release Notes]** lets you view the release notes of SuperSign Simple Editor.





To obtain the source code under GPL, LGPL, MPL and other open source licenses, that is contained in this product, please visit

<http://opensource.lge.com>.

In addition to the source code, all referred license terms, warranty disclaimers and copyright notices are available for download.

LG Electronics will also provide open source code to you on CD-ROM for a charge covering the cost of performing such distribution (such as the cost of media, shipping and handling) upon email request to opensource@lge.com. This offer is valid for three (3) years from the date on which you purchased the product.